



No. Misc/Integration of Civil offices/SECE/BW -I

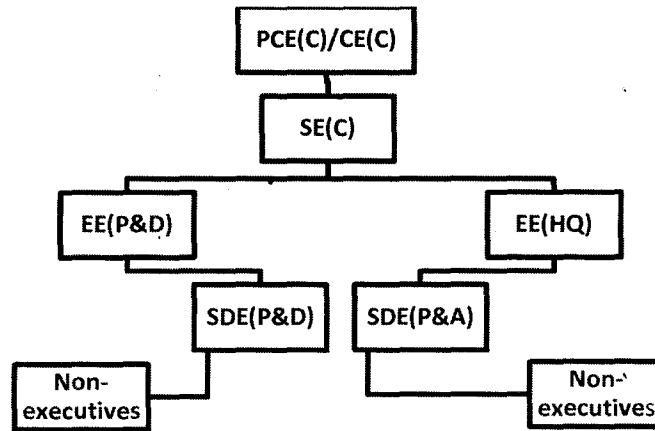
Dated /01/2015

ORDER

Sub:-Integration of O/o Superintending Engineers (Civil) with O/o Pr.Chief Engineer/Chief Engineer (Civil) is functioning at the same station.

The O/o Superintending Engineers (Civil) functioning at the same station as that of Principal Chief Engineer / Chief Engineers (Civil) is hereby integrated with the latter with immediate effect.

2. Hierarchy after integration of O/o SE(C) with CE(C) will be as follows:-



3. The Executives shall continue to exercise their delegated Administrative, Financial and Statutory Powers vested in them.

This is issued with the approval of the Competent Authority.

*S.K. Agrawal*  
(S.K. Agrawal)  
AGM (BW-I)

16/01/15

Copy to:-

- 1 PS to ED (NB) BSNL, New Delhi.
- 2 PS to PGM (BW) BSNL, New Delhi.
- 3 All CGM, BSNL.
- 4 All PCE© / CE (C) ,/CE (Arb)/GM(L&B)/CE (EP) BSNL.
- 5 All Addl CE© / SE (C) BSNL.
- 6 CAOs concerned.
- 7 Intranet Portal.

*R.N. Yadav*  
(R.N. Yadav)  
DM (BW-I)